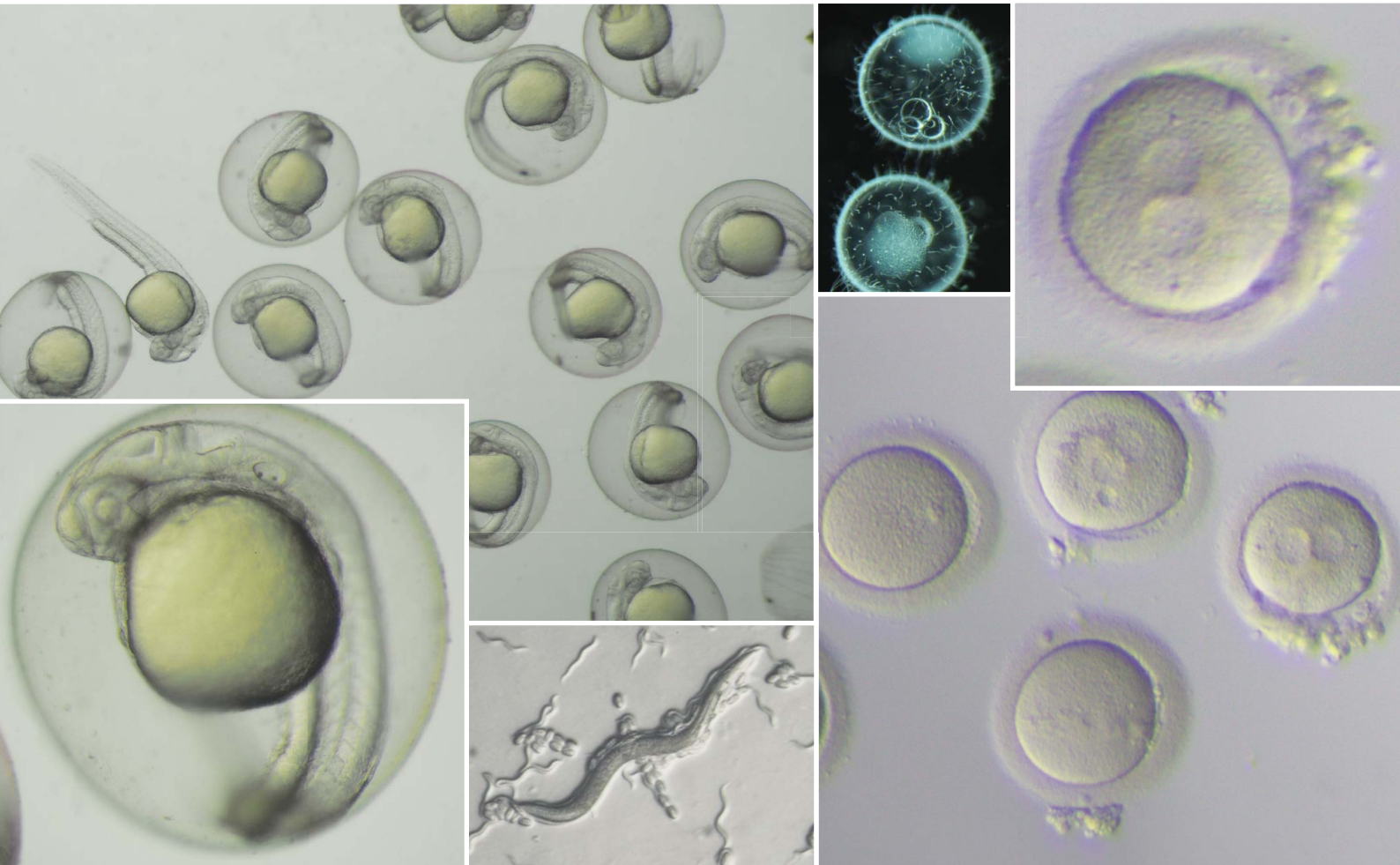


SZX2-ILLTQ

SZX2/SZ2 Series and MVX10 System

Advance Your Research with Multiple Observation
and Contrast Methods



Quad Position LED Transmitted Light Illumination Base (SZX2-ILLTQ)

- ▶ Four-position turret and cartridges enable you to easily select the observation method and contrast for each specimen.
- ▶ Thin transmitted illumination stand makes it easy to access the top of the gantry while maintaining a low eye point.
- ▶ LEDs are cooler than a halogen lamps, reducing the risk of heat damages to your samples during long-duration experiments.
- ▶ Long-life (60,000 hours) LED light with low power consumption reduces running cost.



Research stereo microscope SZX16 with SZX2-ILLTQ

Choose Your Cartridge and See Your Research in Detail

Oocyte and embryo



▶ Use oblique and high-contrast brightfield (BF) to clearly view the polar body, pronucleus, and blastomere for quick decision-making.

C. elegans

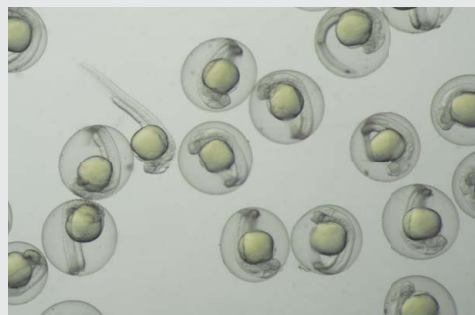
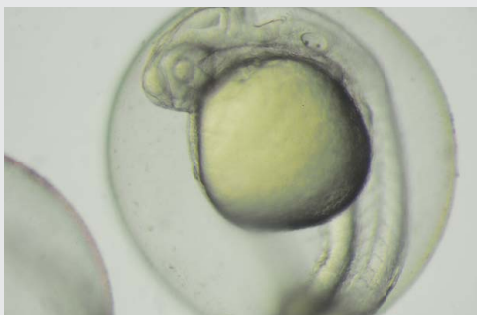


Standard contrast
(Easy observation and operation)



High contrast
(Confirm the organism's movement status and orbit)

Zebra fish



▶ Select oblique or brightfield observation methods and use the high-contrast cartridge to observe the internal structure of a zebra fish.

Cartridge lineup

Product	SZX2-CBFL	SZX2-CBF	SZX2-CBFH	SZX2-COBL	SZX2-COB	SZX2-COBH	SZX2-CSH	SZX2-CDF	SZX2-CPO
Method	BF	BF	BF	Oblique	Oblique	Oblique	Shade plate	DF	PO
Contrast	Low-con.	Standard	High-con.	Low-con.	Standard	High-con.			



All images are captured by stereo microscope with SZX2-ILLTQ.
Images are courtesy of National Institute for Basic Biology, Spectrography and Bioimaging Facility, Joe Sakamoto Ph.D., Yasuhiro Kamei Ph.D. (cover page, top center)

- OLYMPUS CORPORATION is ISO14001 certified.
- OLYMPUS CORPORATION is ISO9001 certified.
- All company and product names are registered trademarks and/or trademarks of their respective owners.
- Images on the PC monitors are simulated.
- Specifications and appearances are subject to change without any notice or obligation on the part of the manufacturer.

www.olympus-lifescience.com

OLYMPUS[®]

OLYMPUS CORPORATION
Shinjuku Monolith, 2-3-1 Nishi-Shinjuku, Shinjuku-ku, Tokyo 163-0914, Japan